

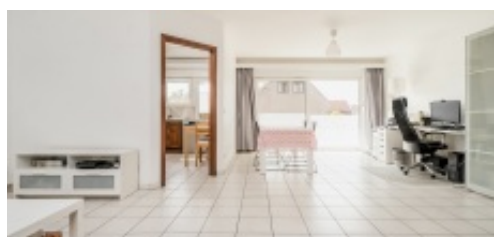
## Light, ready to move in apartment with 2 bedrooms & garage box

**890 €/month**

Berkhoevelaan 6, 2570 Duffel



96 m<sup>2</sup>



Very bright flat with 2 bedrooms and a garage.

Spacious entrance hall with toilet, storage / laundry room, a spacious living room with lots of light which can be arranged with lounge and dining area.

Practical kitchen with cupboards and appliances (fridge, oven, ceramic hob and cooker hood), followed by a nice terrace, 2 bedrooms.

Shutters are provided at the back, a low general cost (€45/month), no lift, large garage / storage room (+ € 70/month).

Close to the village centre, access roads and shops.

Available from 01/11/2022.

## Characteristics

### GENERAL

Address:	Berkhoevelaan 6 2570 Duffel
Price:	890 €/month
Habitable surface:	96 m <sup>2</sup>
Number of bedrooms:	2
Number of bathrooms:	1
Number of garages:	1
Cadastral income:	€0
Availability:	Date

### LAYOUT

Entrance Hall:	7.69 m <sup>2</sup>
Storage:	1.92 m <sup>2</sup>
Salon:	35.45 m <sup>2</sup>
Kitchen:	9.05 m <sup>2</sup>
Toilet 1:	1.28 m <sup>2</sup>
Bedroom 1:	12.58 m <sup>2</sup>
Bedroom 2:	5.39 m <sup>2</sup>
Bathroom 1:	14.77 m <sup>2</sup>
Terrace:	8.52 m <sup>2</sup>
Garage:	16.15 m <sup>2</sup>

Light, ready to move in apartment with 2 bedrooms & garage box

**890 €/month**

Berkhoevelaan 6, 2570 Duffel

 2  96 m<sup>2</sup>

COMFORT

Heating:	Individual
Kitchen:	All built-in
Glazing:	Double
Window frame:	Pvc

EPC

EPC:	106 kWh/m <sup>2</sup>
EPC level:	B

ADDITIONAL INFORMATION

Urban planning destination:	Living area
Urban planning permits:	Not applicable
Summons and recovery claim:	Not applicable
Pre-emption right:	Not applicable
Subdivision permit:	Not applicable
Flood-sensitive area:	Not yet requested