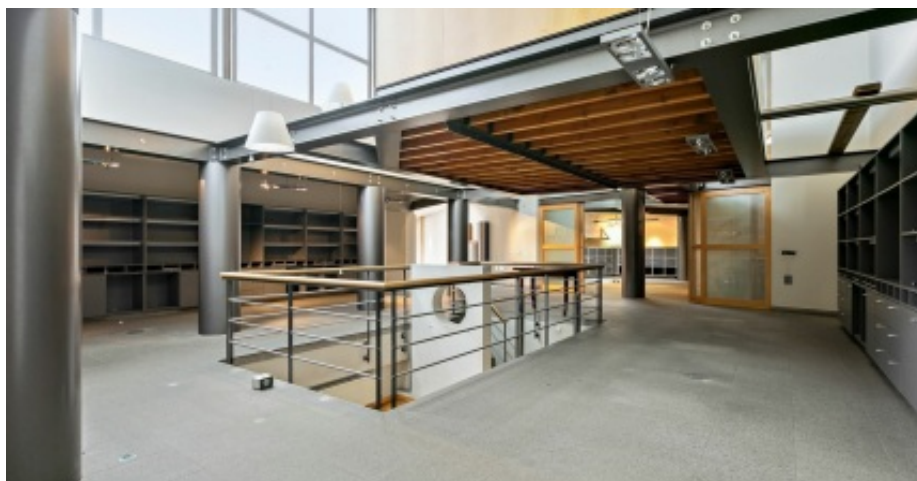


Commercial premises and 2 parking spaces

€ 1.690

Antwerpsestraat 47, 2500 Lier

 420 m²


Multifunctional and characterful loft building of 420m² and 2 covered car parking spaces in THE shopping street of Lier! This building is known as a commercial building and has a ground floor area of 280m², consisting of 2 parts connected by a wide skylight. A large showcase provides optimal visibility in the shopping street and creates a pleasant reception area/entryway. The light street can be used as an extra shop window possibly in combination with an interior garden. In the rear area, several mezzanines were used to maintain a large sense of space and plenty of light. 2 sanitary blocks, office and filing cabinets are already provided.

In the basement space of 30 m² is one of the 2 access doors to the parking behind the building where 2 parking spaces are located.

Easy access by train and bus station incl parking at 500 m.

This exceptional commercial property has a remarkable surface area and layout, in short, an ideal property for various exploitations. So we see a nice store, office space, liberal professions, practice space or even escape room! In short, are you looking for an exceptional property to run your business in the heart of Lier, make your appointment quickly!

Characteristics

GENERAL

Address:	Antwerpsestraat 47 2500 Lier
Price:	€ 1.690
Habitable surface:	420 m ²
Facade width:	6.74 m
Cadastral income:	€7702
Availability:	Onact

LAYOUT

Commercial Space:	280 m ²
:	51 m ²
Mezzanine:	51 m ²
:	35 m ²
:	10.92 m ²
:	12.5 m ²
Depot:	30 m ²

Commercial premises and 2 parking spaces

€ 1.690

Antwerpsestraat 47, 2500 Lier


 420 m²

COMFORT

EPC

Heating:	Individual
Kitchen:	Cupboards & appliances
Glazing:	Double
Window frame:	Alu

EPC level: E

ADDITIONAL INFORMATION

Urban planning destination:	Living area
Urban planning permits:	Yes
Summons and recovery claim:	No judicial recovery measure or administrative measure
Pre-emption right:	No
Subdivision permit:	No
Flood-sensitive area:	Not located in a flood-prone area