

Superb penthouse in contemporary villa

€ 1.360.000

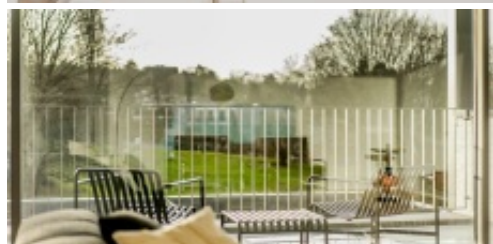
1180 Uccle



3



180 m²



Superb 3 bedroom PENTHOUSE with beautiful terrace, designed by architect Marc Corbiau, occupying the second floor of a contemporary villa located in a green setting.

Very bright, benefiting from quality interior finishes and a high level of energy performance, this PENTHOUSE (+/- 180 m²) has a large living room with parquet floor, an open kitchen (brand BULHAUP) with central island / bar, a large sunny terrace (+/- 36m²) accessible from the kitchen and living room, a day hall with cloakroom, a separate toilet, a master suite with terrace (composed of a bedroom, an office area and a private bathroom (bath, shower, double sinks and toilet)), 2 beautiful bedrooms with terrace, a shower room (shower, double sinks and toilet), a laundry / technical room. Excellent location, close to the Observatory area and all facilities.

Parking space and cellar available, surcharge.

Sale subject to VAT (21%) on the construction part and registration fees (12.5%) on the land part.

Characteristics

Superb penthouse in contemporary villa

€ 1.360.000

1180 Uccle



3



180 m²

GENERAL

Address:	1180 Uccle
Price:	€ 1.360.000
Habitable surface:	180 m²
Number of bedrooms:	3
Number of bathrooms:	2
Construction year:	2022
Cadastral income:	€0
Availability:	Onact

LAYOUT

:	1.11 m²
:	4.94 m²
Living:	55.2 m²
Kitchen:	12.62 m²
Terrace:	29.82 m²
Washing Space:	5.02 m²
Toilet 1:	1.22 m²
Night Hall:	6.49 m²
Bedroom 1:	22.53 m²
Bathroom 1:	6.75 m²
Terrace:	1.2 m²
Bedroom 2:	11.96 m²
Terrace:	1.2 m²
Bedroom 3:	15.79 m²
Bathroom 2:	5.43 m²
Terrace:	1.2 m²

COMFORT

Heating:	Individual
Kitchen:	All comfort
Glazing:	Double
Window frame:	Alu

EPC

EPC level:	B
------------	---

ADDITIONAL INFORMATION

Urban planning destination:	Living area
Urban planning permits:	Yes
Summons and recovery claim:	No judicial recovery measure or administrative measure
Pre-emption right:	Not yet requested
Subdivision permit:	Yes
Flood-sensitive area:	Not yet requested