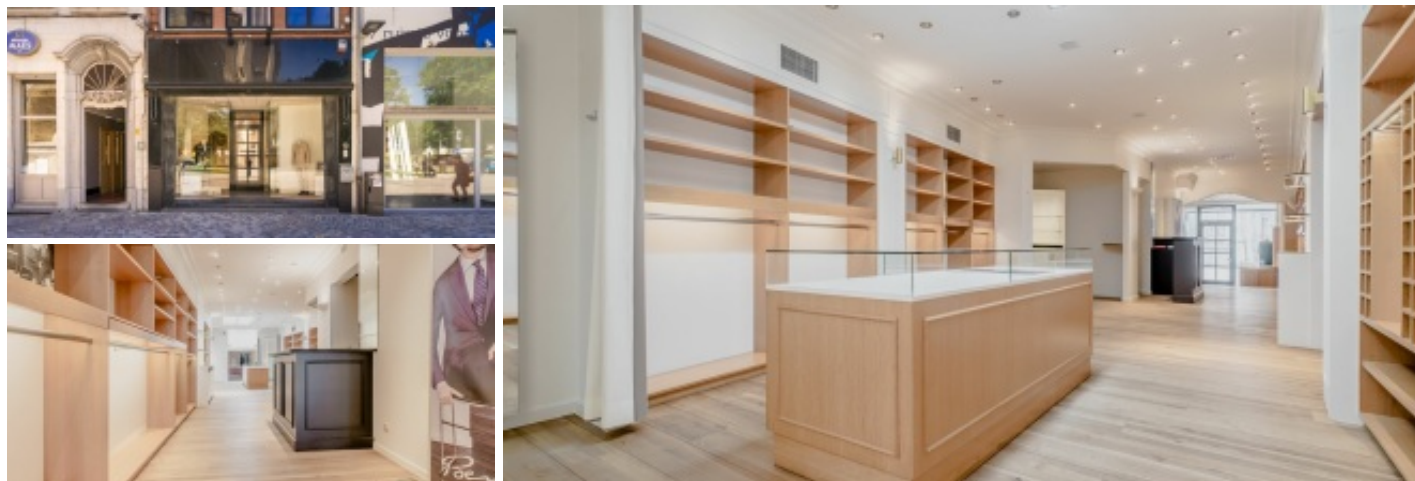


Multifunctional building in exceptional location just in front of the St Rombouts tower

3.000 €/month

Onder Den Toren 10, 2800 Mechelen



Commercial ground floor with workshop/storage space in an exceptional location just in front of the St Rombouts tower. The surface of the commercial ground floor amounts to +/- 140m² (incl. sanitary facilities), with at the back a superstructure (1st/2nd floor) as storage space of +/- 63m². The commercial space has already been completely renovated and is located on a top location in Mechelen. Visibility and parking space are certainly major assets here. Numerous possibilities for exploitation: shop, food shop, catering business, ...

Characteristics

GENERAL

Address:	Onder Den Toren 10 2800 Mechelen
Price:	3.000 €/month
Plot width:	4.9 m
Facade width:	4.9 m
Cadastral income:	€0
Availability:	Immediate

LAYOUT

Entrance Hall:	7.04 m ²
Commercial Space:	65.5 m ²
Commercial Space:	13.25 m ²
Commercial Space:	60.91 m ²
Storage:	15.76 m ²
Storage:	47.43 m ²

COMFORT

Heating:	Individual
Kitchen:	Not present
Glazing:	Single and Double
Window frame:	Pvc and Wood

EPC

EPC level:	A+
------------	----

Multifunctional building in exceptional location just in front of the St Rombouts tower

3.000 €/month

Onder Den Toren 10, 2800 Mechelen

ADDITIONAL INFORMATION

Urban planning destination:	Residential area with cultural, historical and esthetic value
Urban planning permits:	Yes
Summons and recovery claim:	No judicial recovery measure or administrative measure
Pre-emption right:	No
Subdivision permit:	No
Flood-sensitive area:	Not located in a flood-prone area